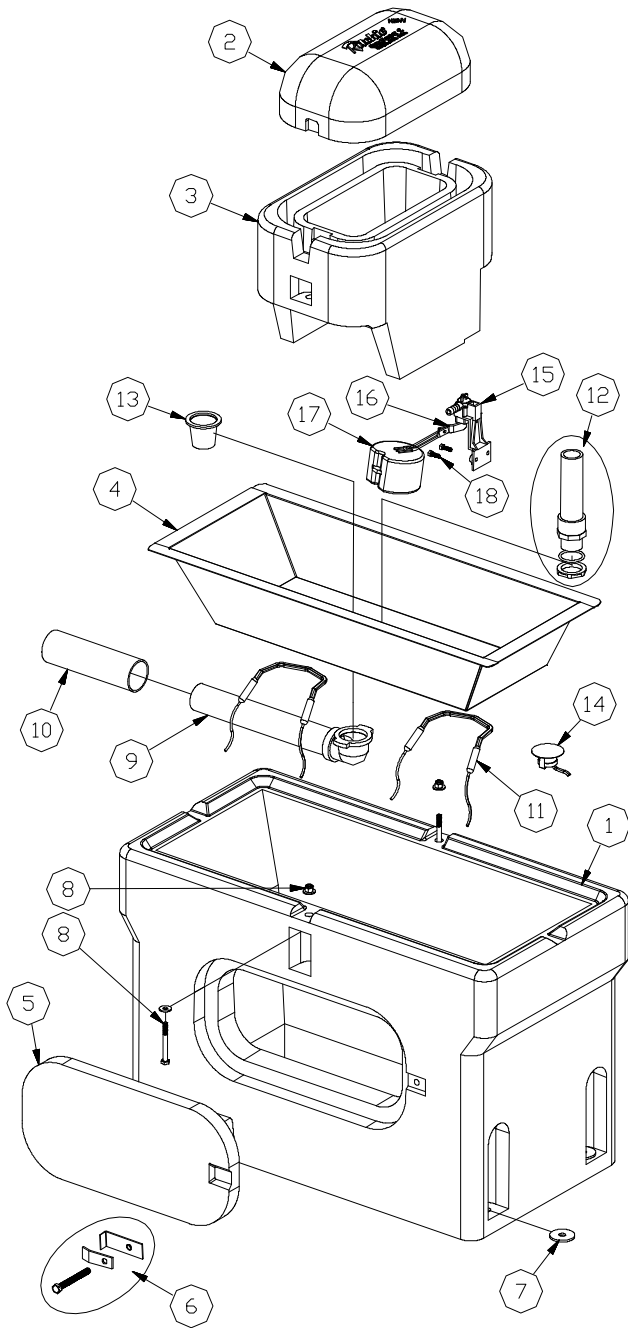


OmniFount 2

Part # 16619



| Item | Part # | Description | Qty |
|---|--------|----------------------------------|--------|
| 1 | 16620 | Casing Omni 2 | 1 |
| 2 | 18424 | Cover Omni 2 | 1 |
| 3 | 18281 | Frame Omni 2 | 1 |
| | 18348 | Cover & Frame Pkg. | 1 Pkg. |
| 4 | 16616 | Trough SS Omni 2 | 1 |
| 5 | 16621 | Access Panel 8" Poly | 1 |
| 6 | 18147 | Access Panel Hardware Pkg. | 1 Pkg. |
| 7 | 18318 | Bolt Down Washer (4/Pkg.) | 1 Pkg. |
| 8 | 18266 | Screw & Nut 1/4"-20 SS (3/Pkg.) | 1 Pkg. |
| 9 | 11471 | Drain Pipe w/ Elbow | 1 |
| 10 | 17500 | Drain Pipe Guard | 1 |
| 11 | 14150 | Heater 125W 120V (1/Pkg.) | 2 Pkg. |
| 12 | 16866 | Standpipe w/ O-ring & Nut Pkg. | 1 Pkg. |
| 13 | 11480 | Drain Plug | 1 |
| 14 | 11885 | Disc Thermostat Pkg. (1/Pkg.) | 1 Pkg. |
| 15 | 11515 | Valve Bracket 1/2" w/ Screw Pkg. | 1 Pkg. |
| 16 | 12575 | Valve 1/2" Red Pkg. | 1 Pkg. |
| 17 | 13613 | Float 3-1/4" w/ Short Arm Pkg. | 1 Pkg. |
| 18 | 15154 | Screw Valve Bracket (10/Pkg.) | 1 Pkg. |
| NS | 18075 | Drain Washer (6/Pkg.) | 1 Pkg. |
| NS | 13830 | Cable Heater 48W 120V (1/Pkg.) | 1 Pkg. |
| For 240 Volt Omni 2 #16844, See Parts Below | | | |
| NS | 16424 | Cable Heater 48W 240V (1/Pkg.) | 1 Pkg. |
| NS | 16664 | Heater 200W 240V (1/Pkg.) | 2 Pkg. |

NS = Not Shown

Italicized text = Not included or optional configuration add-ons